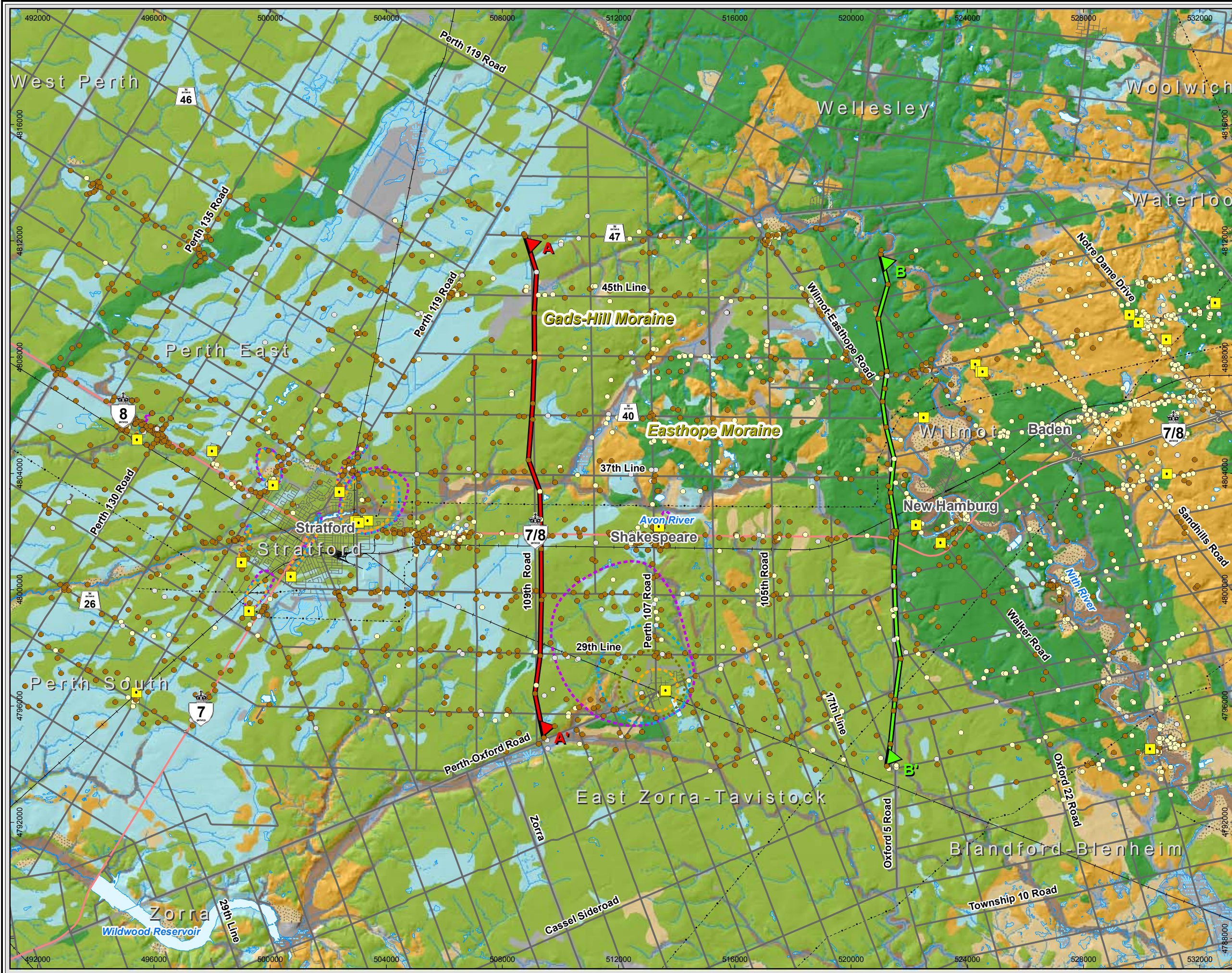


Map Document: (N:\Projects\2007\70347\2008\Final\GIS\Spatial\Map\Revised\Map\70347\SurficialGeology-11x17.mxd)
 04/06/2008 - 4:23:35 PM



Legend

- Intermittent Stream
- Permanent Stream
- - - Transmission Line
- Railway
- ▲ Transect A
- ▲ Transect B
- ▭ Municipal Division
- ▭ Waterbody
- ▭ Cartographic Wetland

Water Well Type

- Overburden
- Bedrock
- Other
- Municipal

Capture Zone

- ▭ 50 day
- ▭ 2 year
- ▭ 10 year
- ▭ 25 year

Surficial Geology

Recent Deposits

- 20: Organic deposits
- 19: Modern alluvial deposits
- 8: Fine-textured glaciolacustrine deposits
 - 8a: Massive-well laminated
- 7: Glaciofluvial deposits
 - 7a: Sandy deposits
 - 7b: Gravelly deposits
- 6: Ice-contact stratified deposits
 - 6: Ice-contact stratified deposits
- 5: Tills
 - 5b: Stone-poor, carbonate-derived silty to sandy till
 - 5d: Glaciolacustrine-derived silty to clayey till

Basemapping from Ontario Ministry of Natural Resources

Highway 7/8 Transportation Corridor Planning and Class EA Study

Surficial Geology

June 2008
Project 70347

Ontario
Gartner Lee

Exhibit 3.5
engineers architects planners